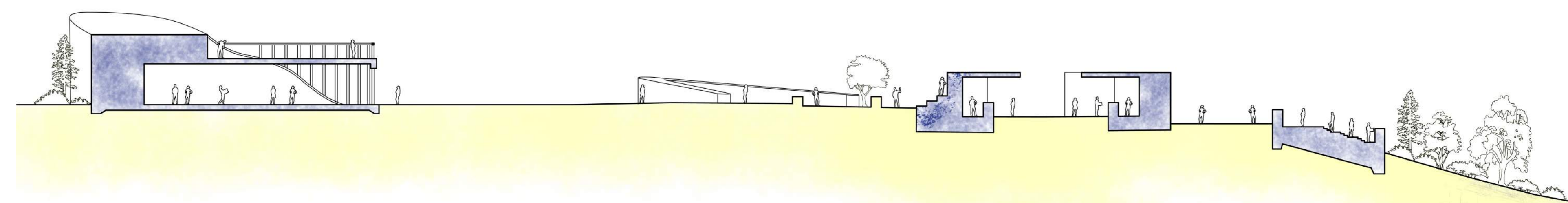


INTERTWINING SEASONS

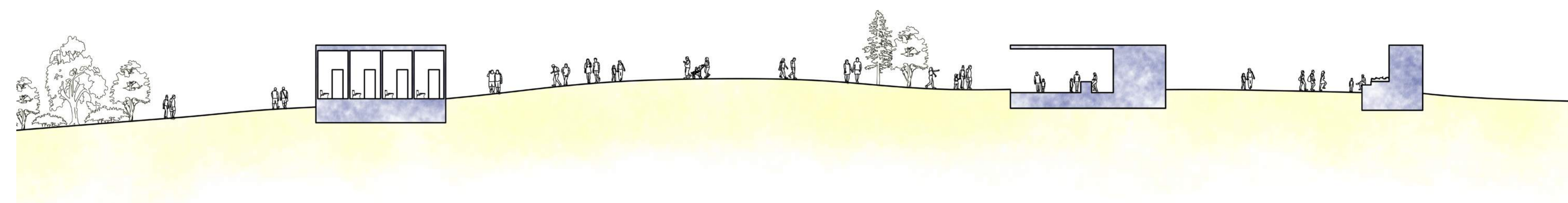


- 1. Strawberry Hill Muesum and Cultural Center
- 2. Event Center
- 3. Community Gardens
- 4. Farmers Market/ General community commerce space
- 5. Lookout Space

Site Plan

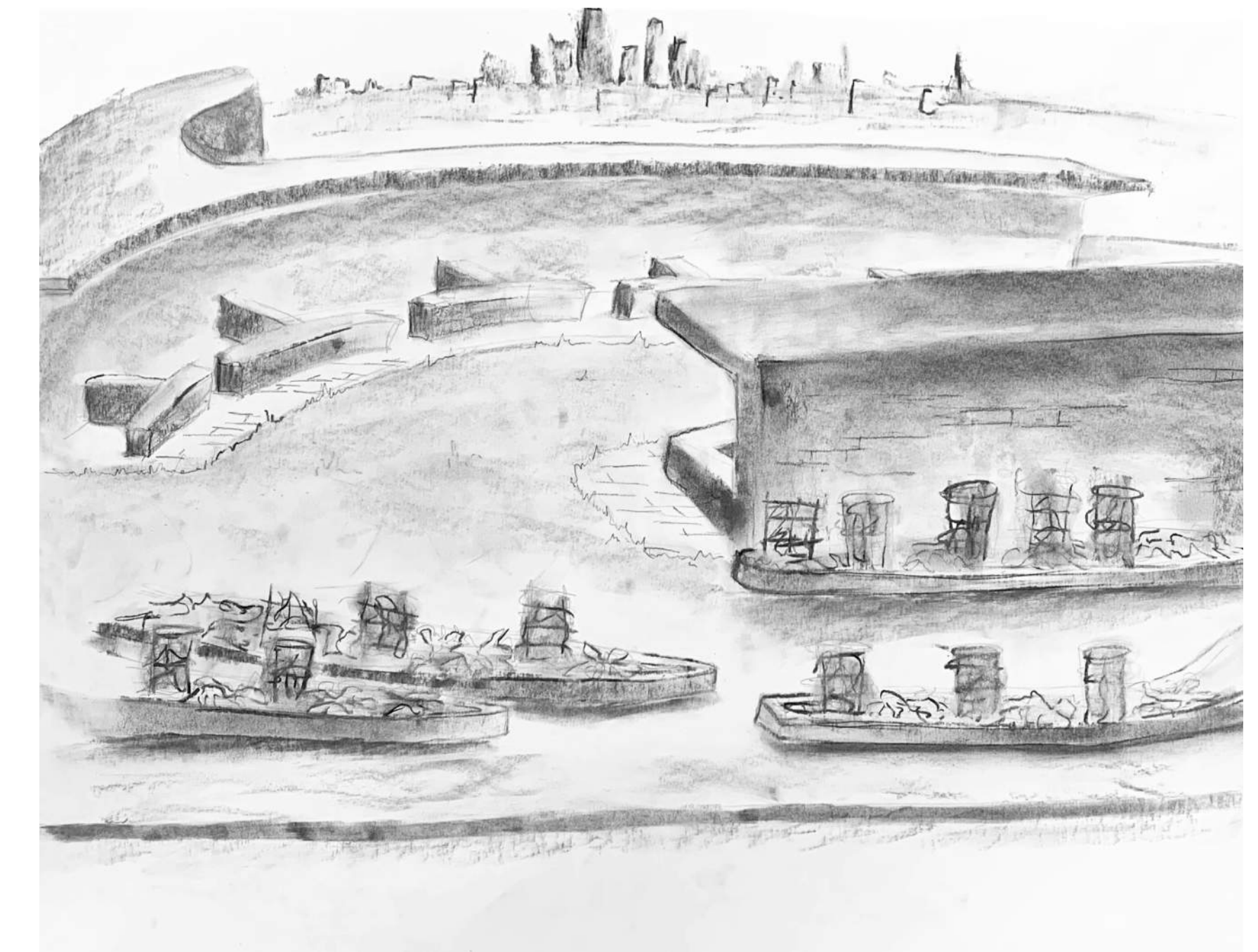


Section A-A

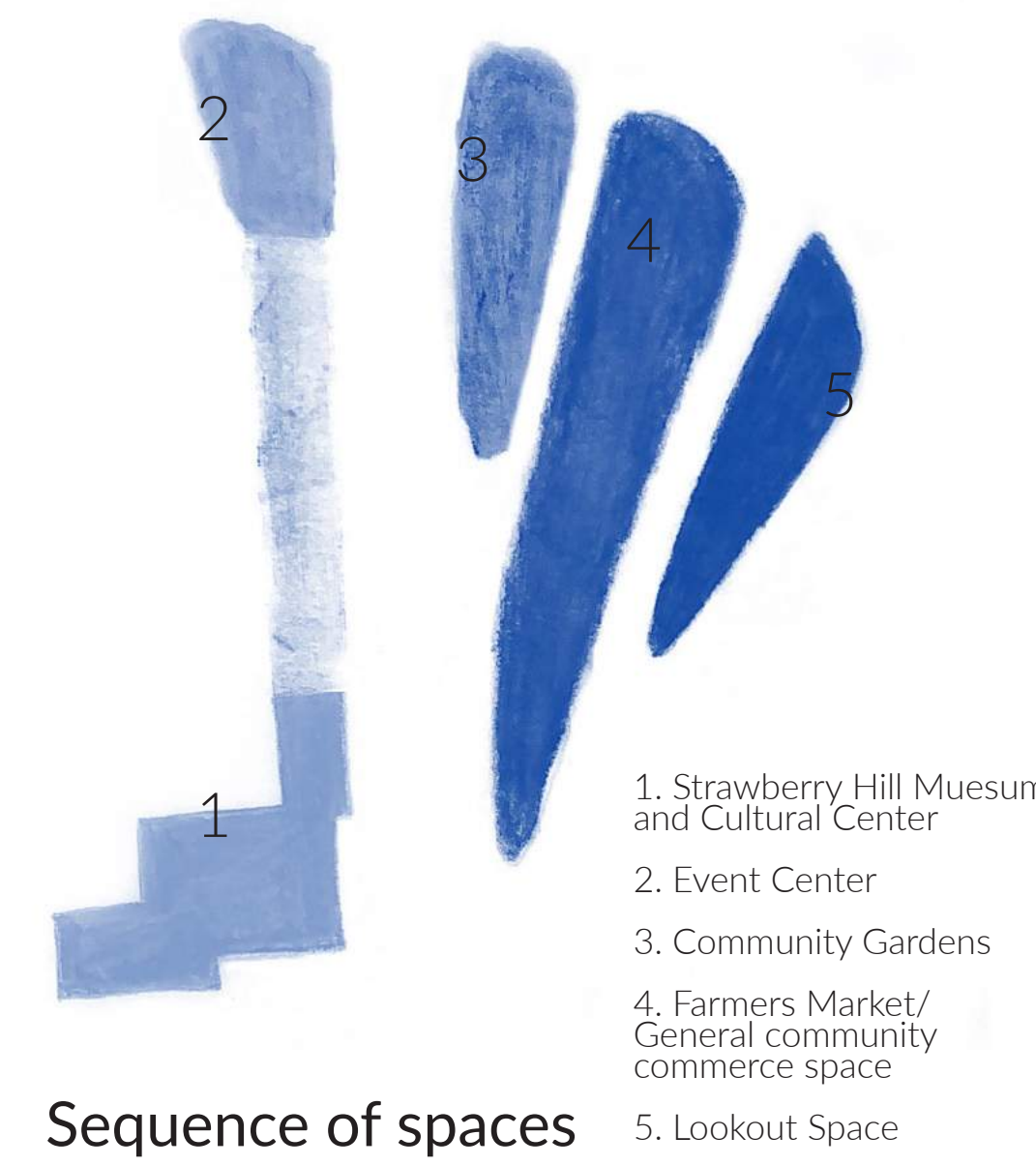


Section B-B

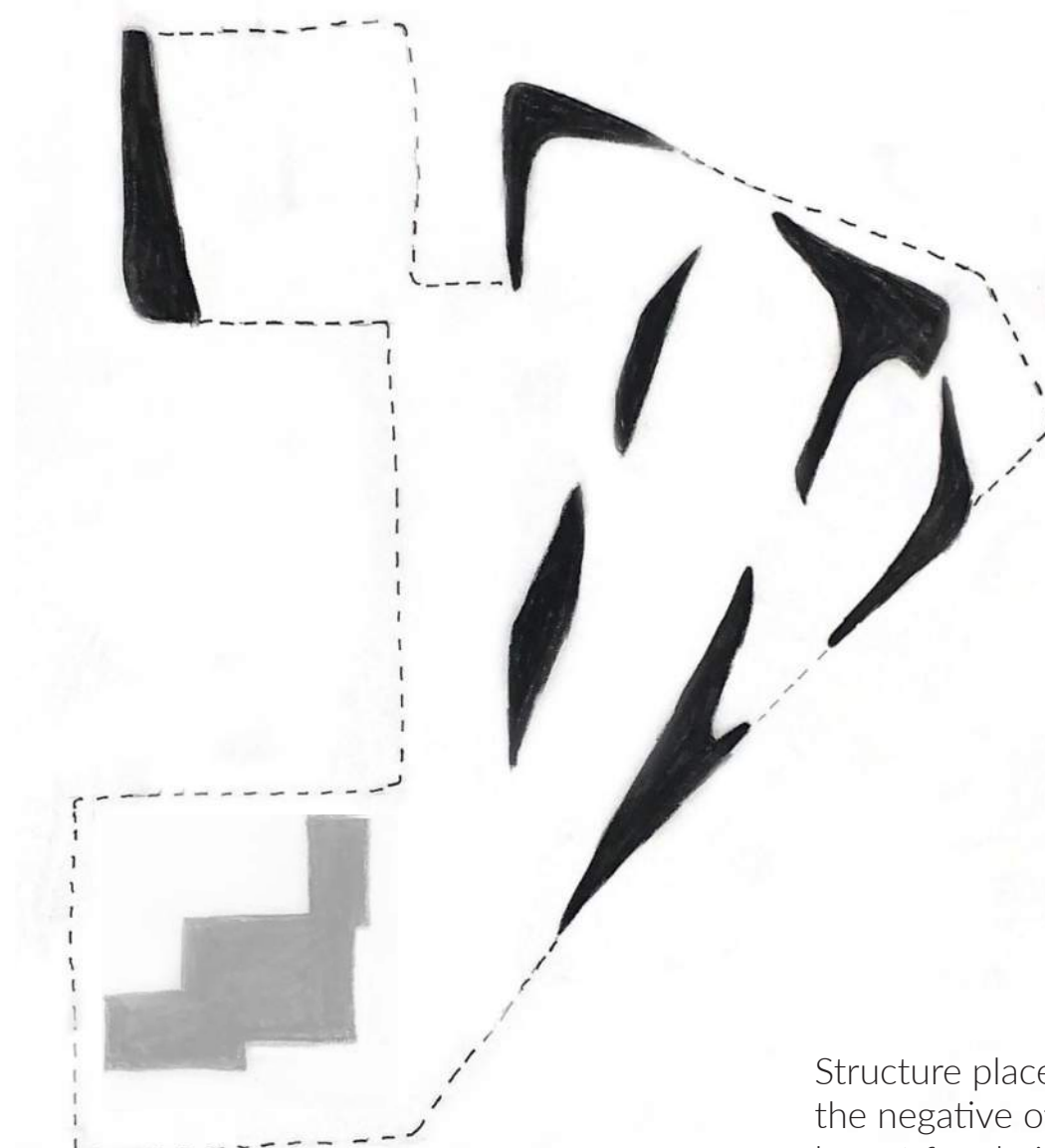
This park was created as a catalyst to bring people together through connections made economic and social boundaries. These connections are expressed by voids cut through Sculptural walls which define a variety of programs. The form of these spaces are informed by the curves of the road and river. These programs exist in a sequence which heighten the current emphasis on food and the strawberry hill community through the museum. Each level operates particularly well in a certain season. Ultimately these elements intertwined through voids to connect the community and museum to the larger urban fabric. This multifunctional setting for community gardening, gathering and supporting brings people of all backgrounds and conditions together to strengthen the strawberry hill community.



Community Garden

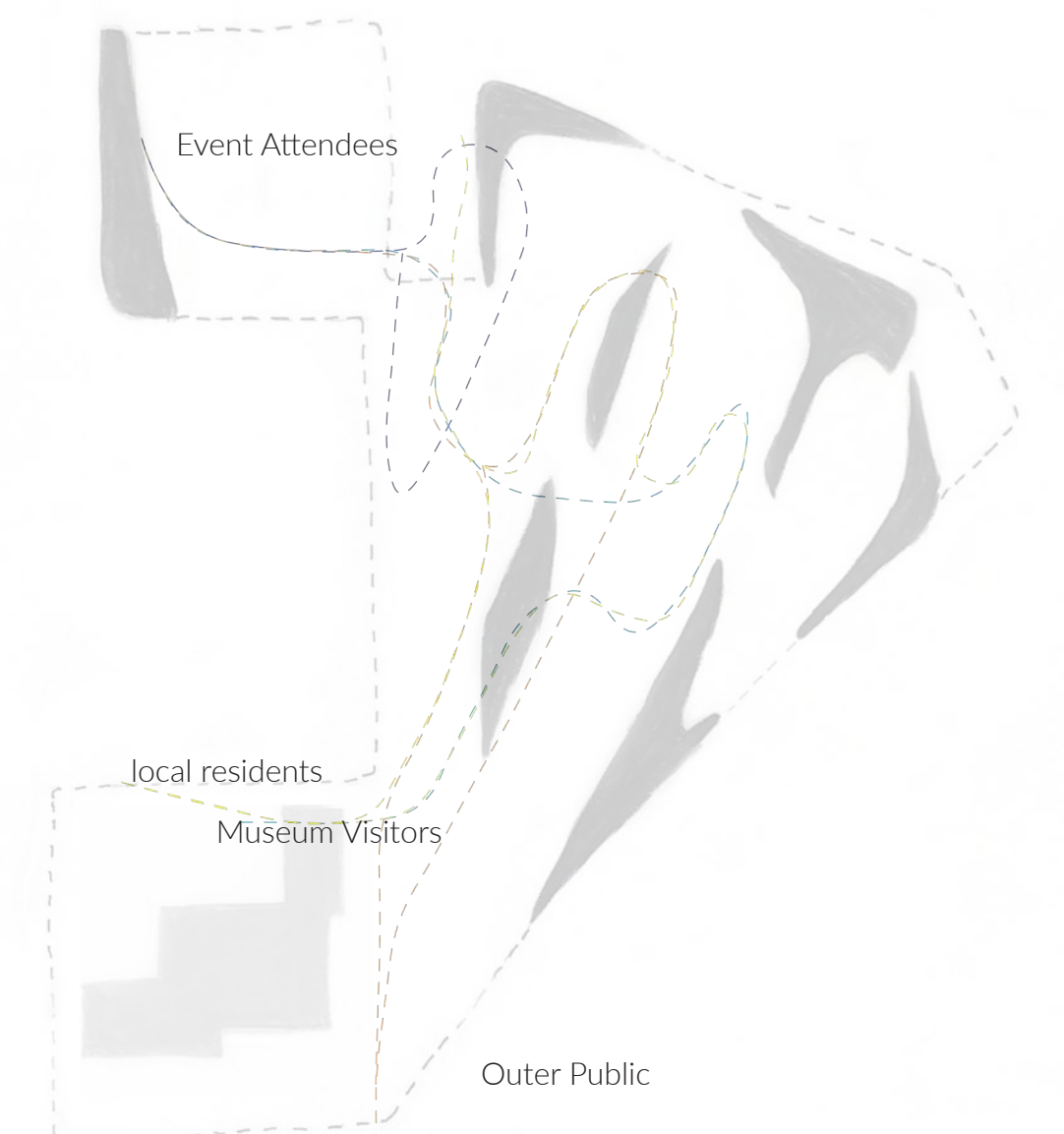


Sequence of spaces

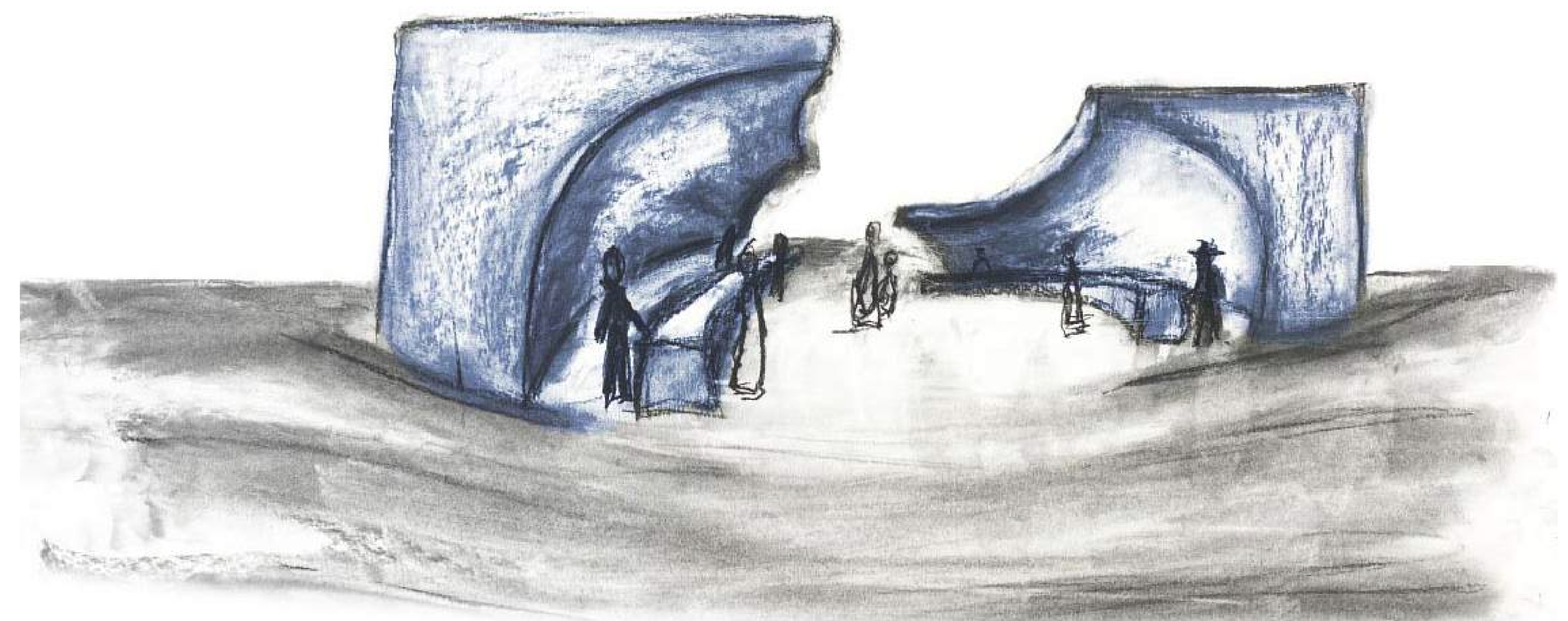


Structural Placement

Structure placement is the negative of program layout for clarity of movement throughout the site.



Circulation



Farmers Market Space